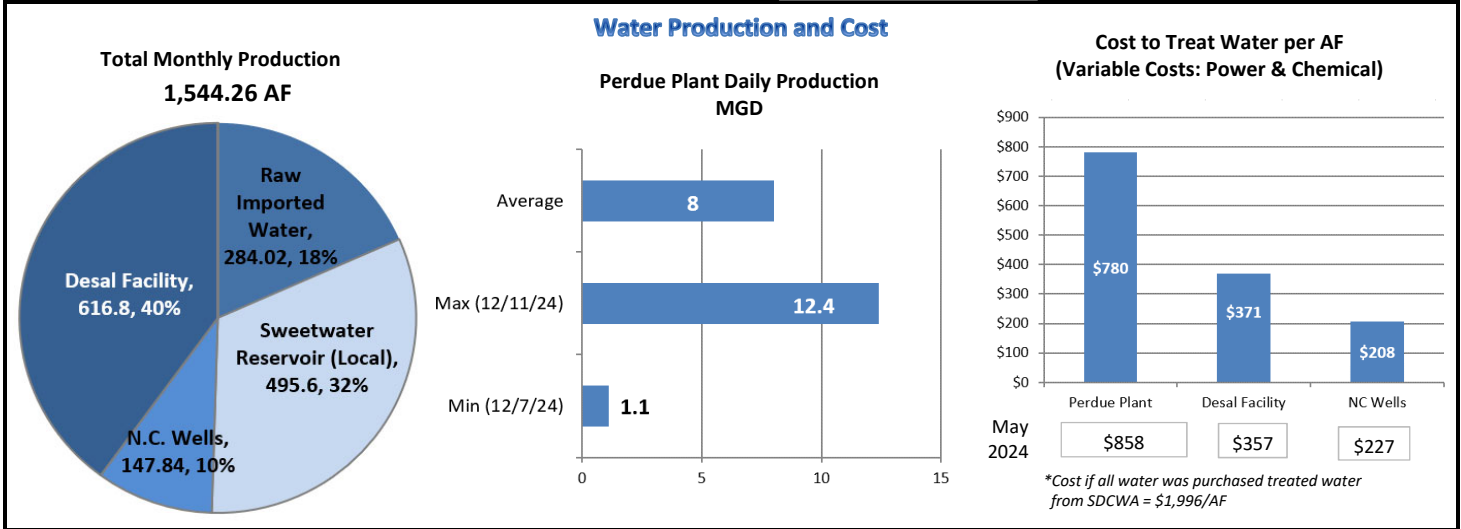
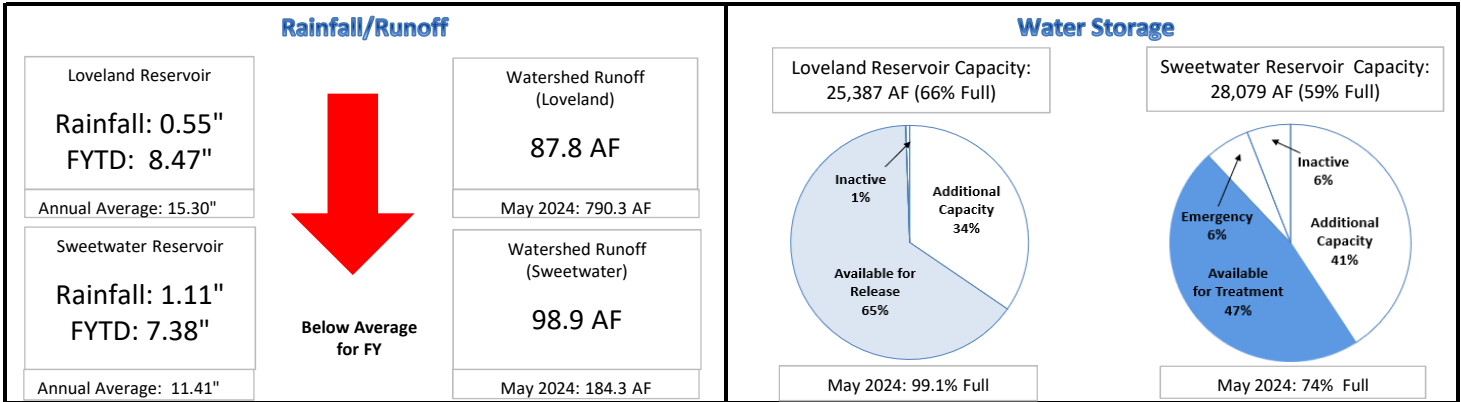
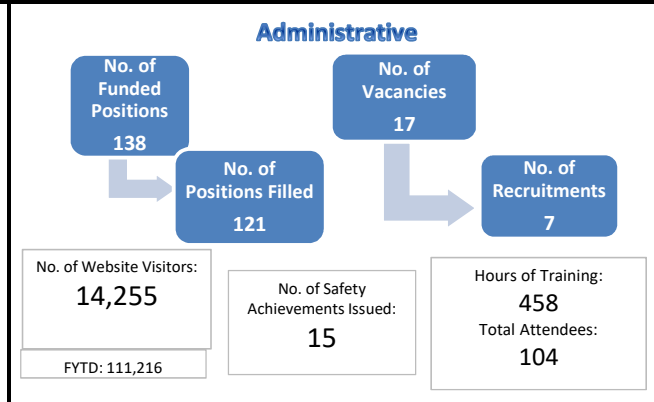


SWEETWATER AUTHORITY MANAGEMENT MONTHLY REPORT
ORGANIZATIONAL PERFORMANCE DASHBOARD (FOR THE MONTH ENDING MAY 31, 2025)



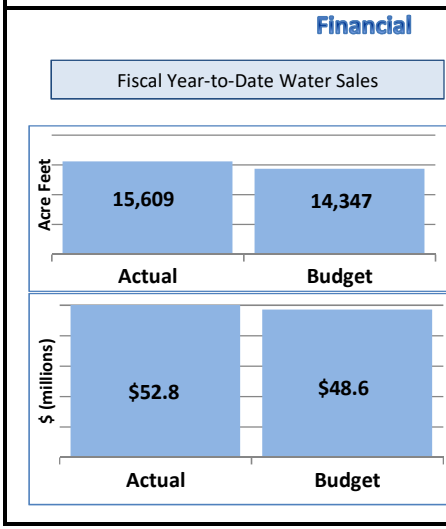
Imported Water

SDCWA Purchases		
	Acre Feet	Dollars
Actual May	284.0	\$424,864
Actual YTD	1,178.9	\$1,731,816
Annual Budget	1,300.0	\$2,077,300



Main Leaks

Cause	Incidents	FYTD
Natural Pipe Aging	1	3
Hit by Contractor	0	2
Tree Root, Settlement	0	0
Fittings, Gaskets, etc	0	4
Trench Settlement	0	3



Expenditures

(millions)

Operating	Capital
Actual	
YTD	LTD
\$42.5	\$14.5
Budget	
YTD	LTD
\$51.3	\$33.6
Percent Remaining	
17%	57%

YTD = Year-to-date
LTD = Life-to-date

Customer Service

	Month	FYTD	Prior FYTD
Delinquent Accounts	111	1,136	607
Credit Card Transactions	10,216	106,413	54,745
High Bill Investigations	38	428	135
Walk-in Customer Assistance	1,484	17,953	10,417
Water Efficiency Outreach	0	13	11
Taste and Odor Complaints	35	97	12
New Accounts	120	1,485	758
Kiosk Payments	43	178	0