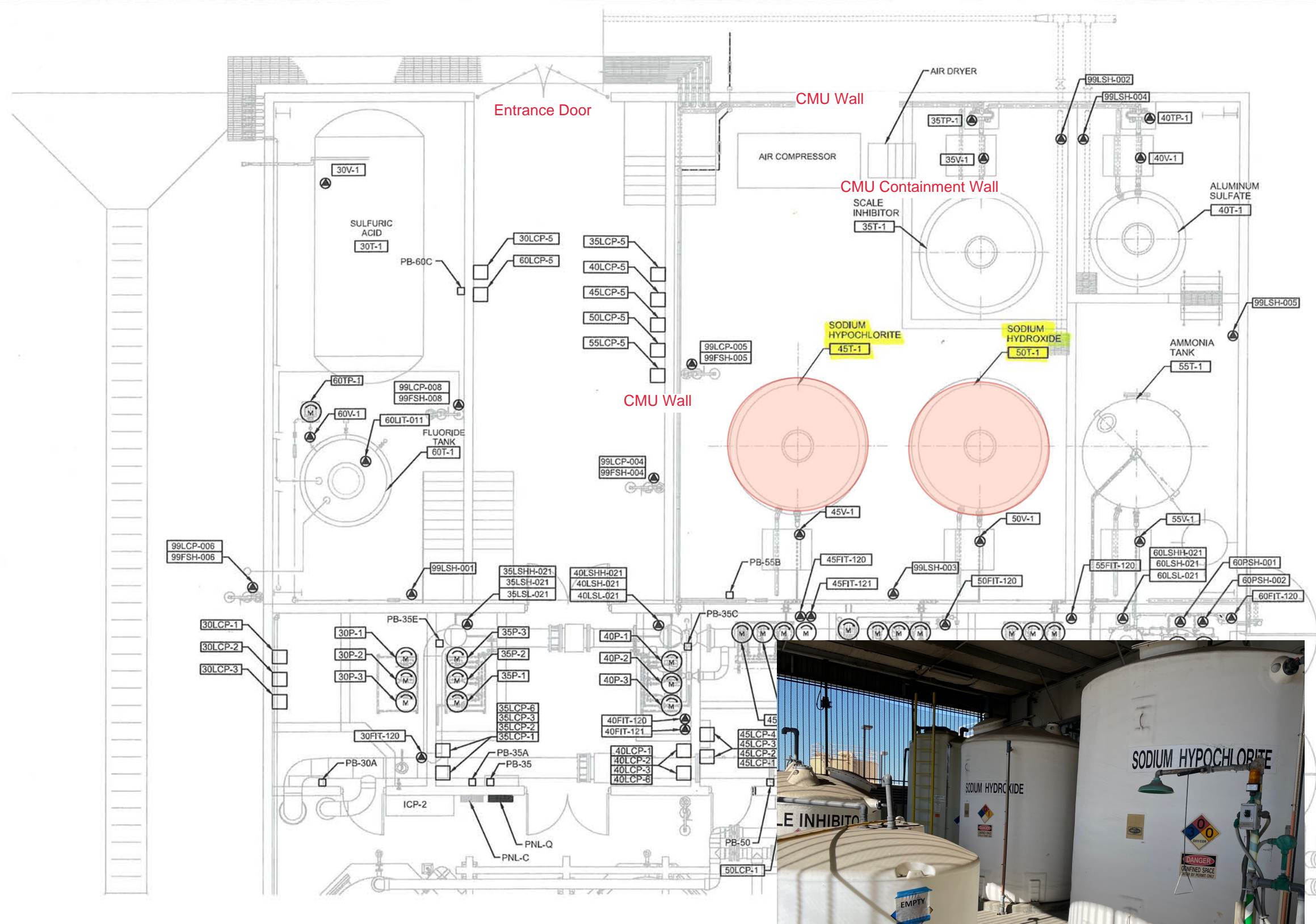


PW:\DEN\488009 - RICHARD A REYNOLDS DESAL FACILITY\006-E-2013_488009.dwg Apr 13, 2018 - 4:36pm



- NOTES:**
1. NOT USED
 2. CORE DRILL FOR CONDUIT ENTRY. REPAIR AND RESTORE WALL TO ORIGINAL CONDITION.
 3. PROVIDE FLEXIBLE CONDUIT TO EACH OF THE LEVEL SWITCHES.
 4. MOUNT LCP TO CONTAINMENT WALL PER (2605-012).
 5. PANELS 30LCP-1, 30LCP-2, 30LCP-3, 35LCP-1, 35LCP-2, 35LCP-3, 40LCP-1, 40LCP-2, 40LCP-3, 45LCP-1, 45LCP-2, 45LCP-3, 45LCP-4, 50LCP-1, 50LCP-2, 50LCP-3, 55LCP-1, 55LCP-2, 55LCP-3, 60LCP-1, 60LCP-2, WILL BE PROVIDED BY OTHERS.
 6. THE TOP OF THE TOP PANEL SHALL BE MOUNTED AT 6'-6" AND THE TOP OF THE BOTTOM PANEL SHALL BE MOUNTED AT 4'-0" AFF.



RECORD DRAWINGS

Revisions Drawn By **ch2m** Date 04/2018
 THESE RECORD DRAWINGS HAVE BEEN PREPARED, IN PART, ON THE BASIS OF INFORMATION COMPILED BY OTHERS. THEY ARE NOT INTENDED TO REPRESENT IN DETAIL THE EXACT LOCATION, TYPE OF COMPONENT NOR MANNER OF CONSTRUCTION. THE ENGINEER WILL NOT BE RESPONSIBLE FOR ANY ERRORS OR OMISSIONS WHICH HAVE BEEN INCORPORATED INTO THE RECORD DRAWINGS.



SWEETWATER AUTHORITY
 PLANS FOR THE INSTALLATION OF:
REYNOLDS DESALINATION FACILITY
 PHASE II EXPANSION
 CHEMICAL AREA POWER AND
 CONTROLS PLAN
 1/4 SECTION 134

REV.	DATE	DESCRIPTION	BY	APPVD.	DESIGN BY: L. LAI	SCALE: AS SHOWN
A	04/05/2018	RECORD DRAWING	ALG	JP	DRAWN BY: K. REYES	DATE: 04/16/2015
B					CHECKED BY: M. GUPTA	DESIGN# B.P. 20084022
C					AS CONSTRUCTED:	PAVEMENT#

WO#	DATE	DATE	DATE
115	4/17/2015	4/17/2015	4/17/2015

115 OF 179 SHEETS
E-13

RECORD DRAWING